



Government Gazette Staatskoerant

REPUBLIC OF SOUTH AFRICA
REPUBLIEK VAN SUID-AFRIKA

Vol. 570

Pretoria, 11

December
Desember 2012

No. 35967

N.B. The Government Printing Works will not be held responsible for the quality of "Hard Copies" or "Electronic Files" submitted for publication purposes



AIDS HELPLINE: 0800-0123-22 Prevention is the cure

IMPORTANT NOTICE

The Government Printing Works will not be held responsible for faxed documents not received due to errors on the fax machine or faxes received which are unclear or incomplete. Please be advised that an "OK" slip, received from a fax machine, will not be accepted as proof that documents were received by the GPW for printing. If documents are faxed to the GPW it will be the sender's responsibility to phone and confirm that the documents were received in good order.

Furthermore the Government Printing Works will also not be held responsible for cancellations and amendments which have not been done on original documents received from clients.

CONTENTS**INHOUD**

<i>No.</i>	<i>Page No.</i>	<i>Gazette No.</i>	<i>No.</i>	<i>Bladsy No.</i>	<i>Koerant No.</i>
GOVERNMENT NOTICE			GOEWERMENTSKENNISGEWING		
Transport, Department of			Vervoer, Departement van		
<i>Government Notice</i>			<i>Goewermentskennisgewing</i>		
1037			1037		
South African National Roads Agency Limited and the National Roads Act (7/1998): The South African National Roads Agency Limited: Declaration Amendment of National Road N11 Section 5	3	35967	Suid-Afrikaanse Nasionale Padagent- skap Beperk en die Nasionale Paaie Wet (7/1998): Die Suid-Afrikaanse Nasionale Padagentskap Beperk: Verklaring Wysiging van Nasionale Pad N11 Seksie 5	4	35967

GOVERNMENT NOTICE

DEPARTMENT OF TRANSPORT

No. 1037

11 December 2012

THE SOUTH AFRICAN NATIONAL ROADS AGENCY LIMITED

Registration No: 98/09584/06

DECLARATION AMENDMENT OF NATIONAL ROAD N11 SECTION 5

AMENDMENT OF DECLARATION NO. 1322 OF 1989

By virtue of Section 40(1)(b) of The South African National Roads Agency Limited and National Roads Act, 1998 (Act No 7 of 1998) I hereby amend declaration No. 1322 of 1989 Schedule paragraph 14, by substituting the section of the descriptive declaration from Volksrust to Amersfoort, with the subjoined sheets 1 to 15 of Plan No. P783/10.

(National Road N11 Section 5: Volksrust – Amersfoort)



MINISTER OF TRANSPORT

GOEWERMENTSKENNISGEWING

DEPARTEMENT VAN VERVOER

No. 1037

11 Desember 2012

DIE SUID-AFRIKAANSE NASIONALE PADAGENTSKAP BEPERK

Registrasie No: 98/09584/06

VERKLARING WYSIGING VAN NASIONALE PAD N11 SEKSIE 5

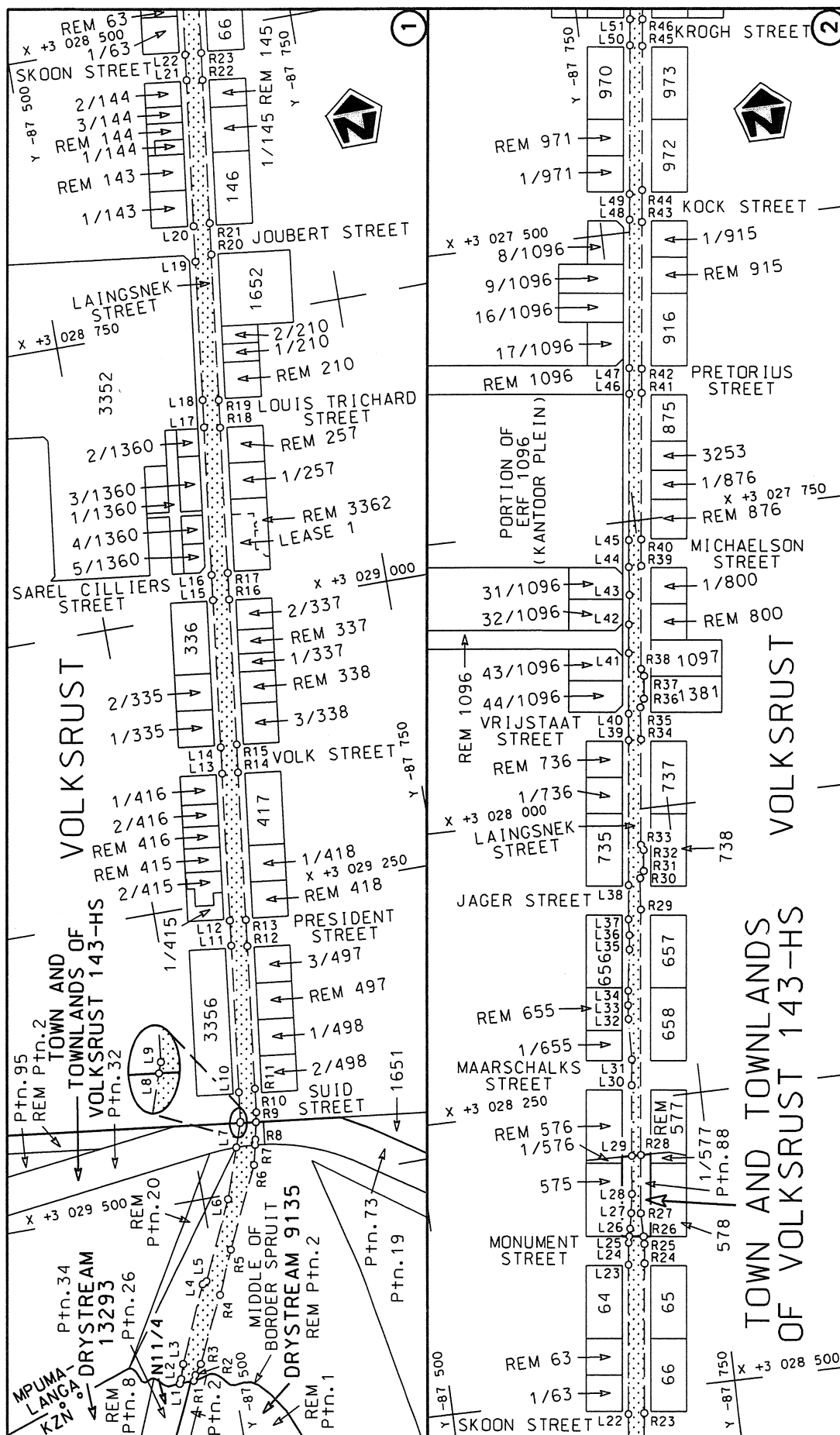
WYSIGING VAN VERKLARING NO. 1322 van 1989

Kragtens artikel 40 (1)(b) van die Suid Afrikaanse Nasionale Padagentskap Beperk en Nasionale Paaie Wet (Wet no. 7 van 1998), wysig ek hiermee verklaring no. 1322 van 1989 Bylae paragraaf 14, deur die gedeelte van die beskrywende verklaring vanaf Volksrust tot Amersfoort, te vervang met meegaande velle 1 tot 15 van Plan no. P783/10.

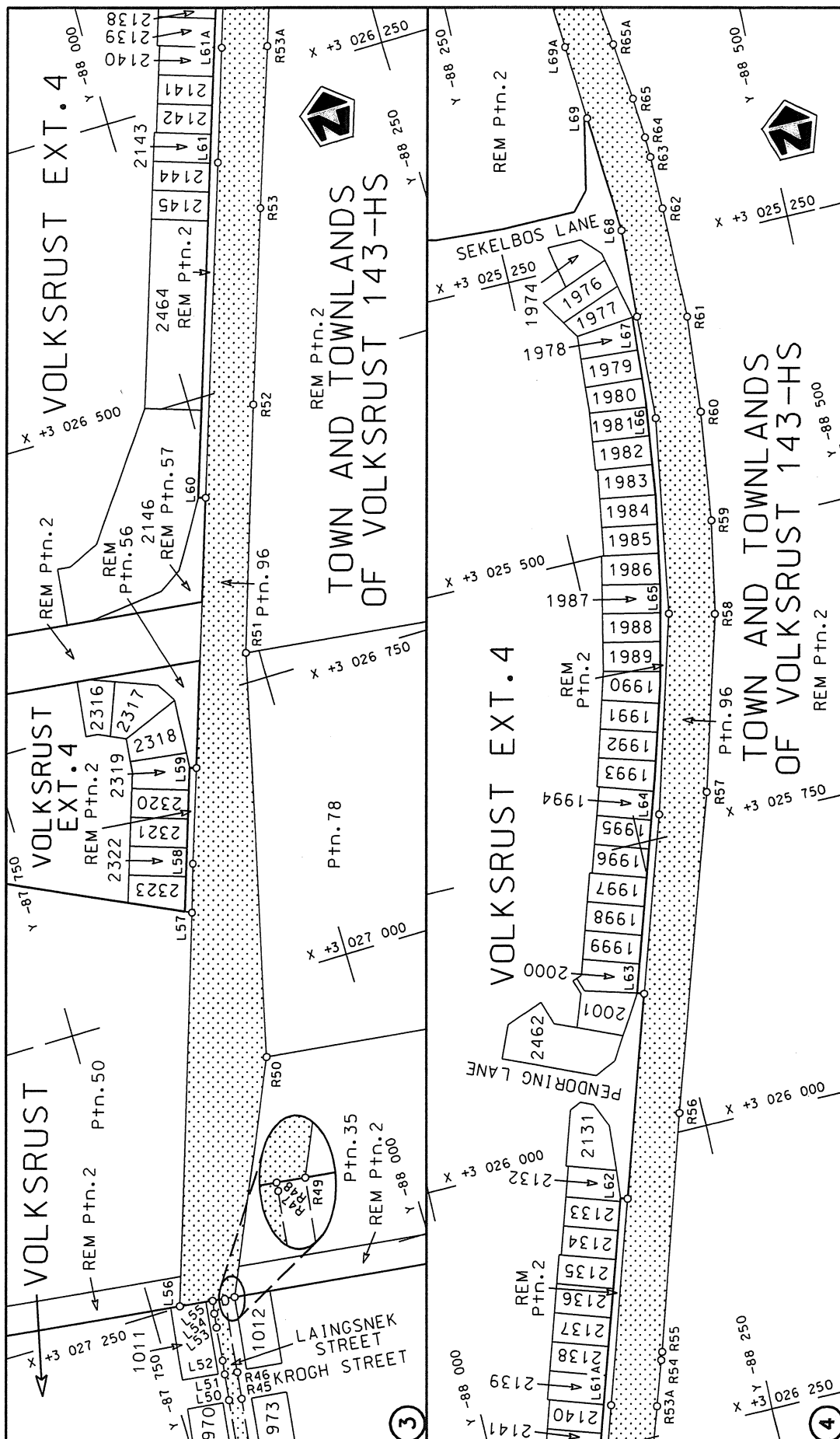
(Nasionale Pad N11 Seksie 5: Volksrust – Amersfoort)



MINISTER VAN VERVOER

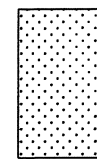


Die Suid Afrikaanse Nasionale Padagentskap Beperk The South African National Roads Agency Limited	Die figuur getoon The figure shown	steldie padreserwe voor van 'n gedeelte represents the road reserve of a portion van Nasionale Roete of National Route	Vel Sheet 1 of 15	Plan P783/10 Seksie N11 Section 5
--	---------------------------------------	---	-------------------------------	--



Die Suid Afrikaanse Nasionale Padagentskap Beperk
The South African National Roads Agency Limited

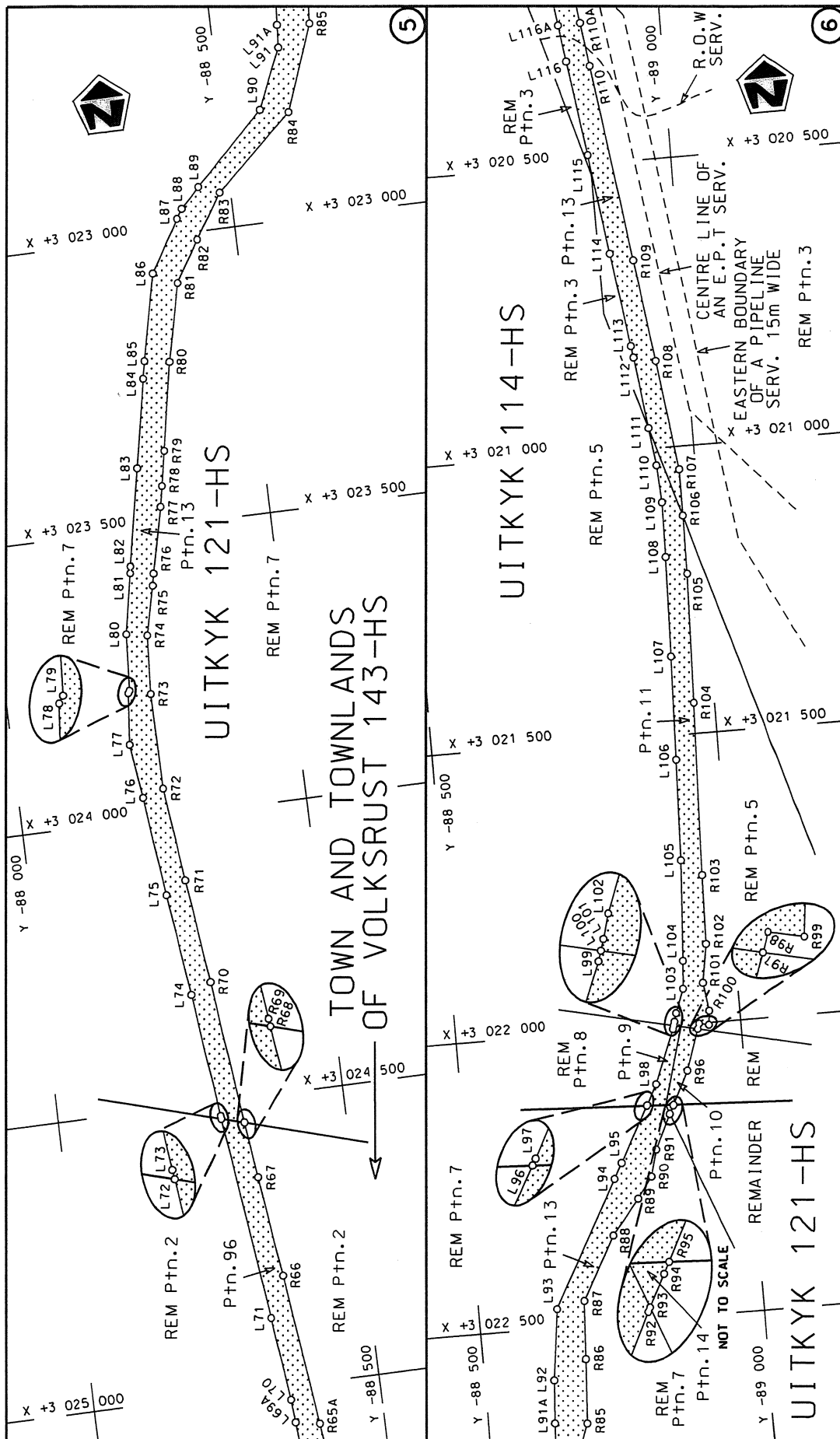
Die figuur getoon
The figure shown



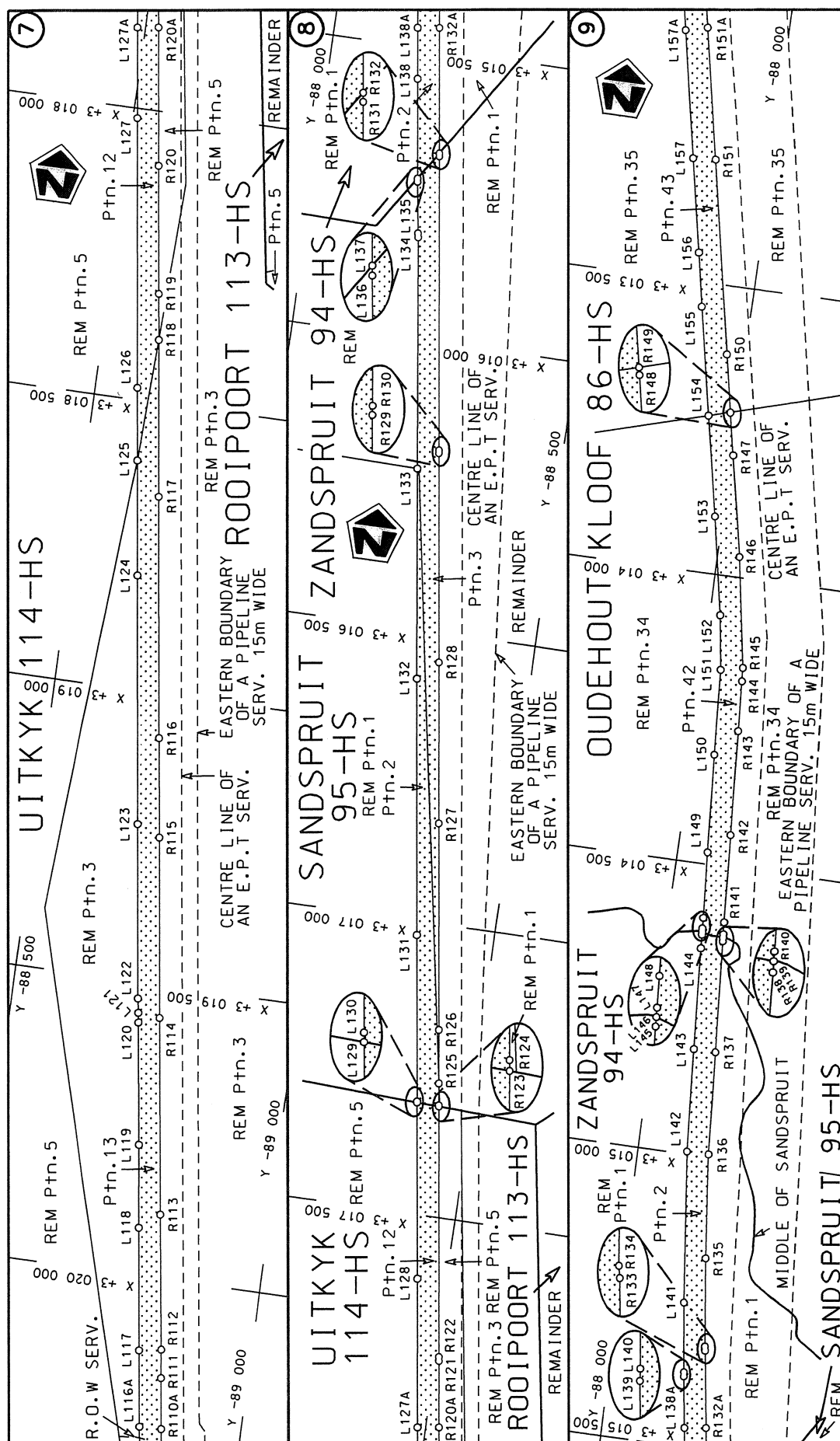
stelt die padreserwe voor van 'n gedeelte
represents the road reserve of a portion
van Nasionale Roete N11
of National Route

5

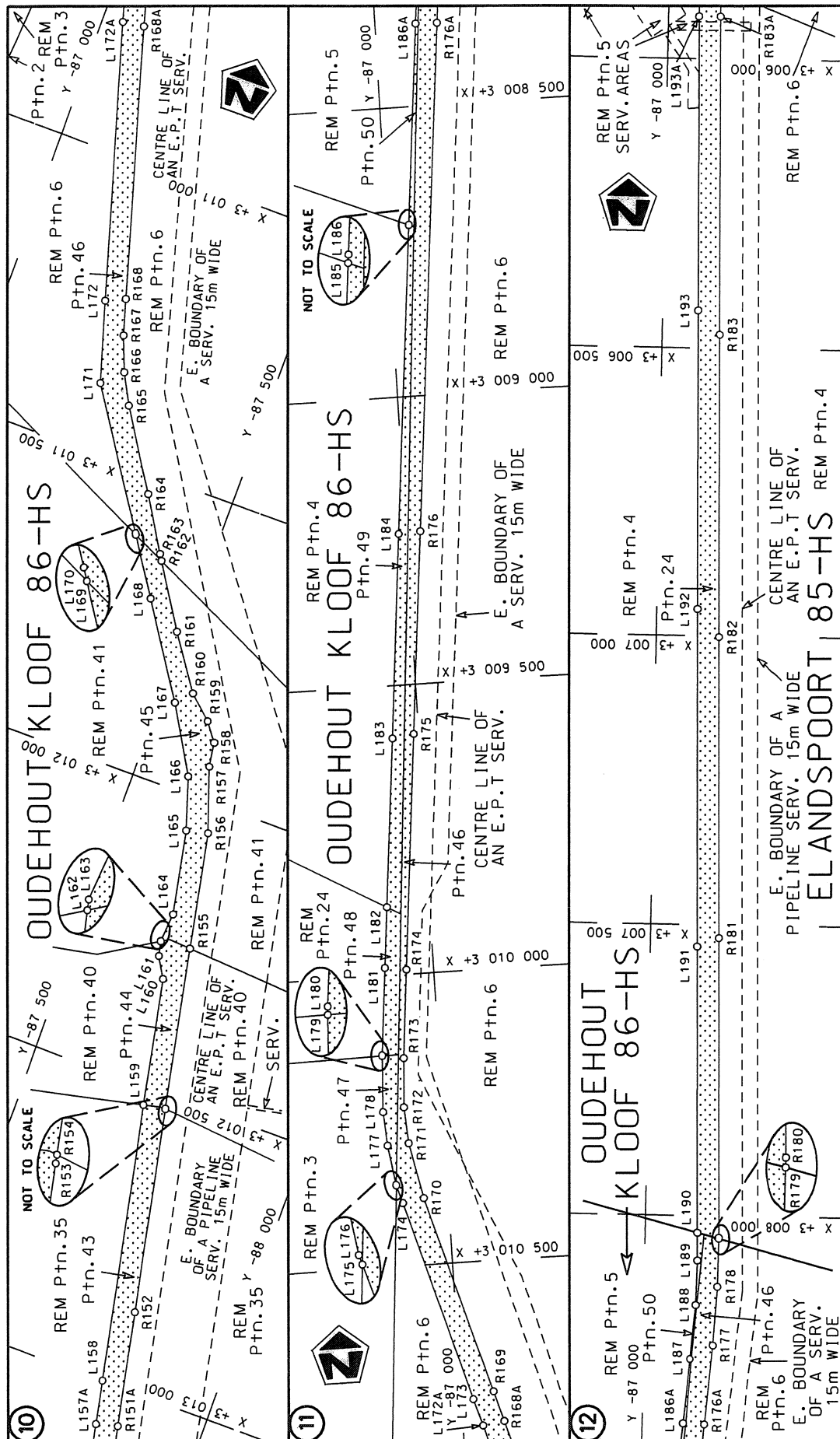
Vel
Sheet 2
of 15
Plan
P783/10




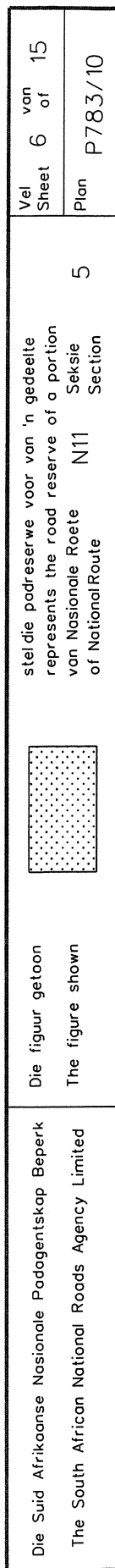
<p>Die Suid Afrikaanse Nasionale Padagentskap Beperk The South African National Roads Agency Limited</p>	<p>Die figuur getoon The figure shown</p>	<p>steldie padreserwe voor van 'n gedeelte represents the road reserve of a portion van Nasionale Roete N11 of National Route</p>	<p>Vel Sheet 3 of 15 Plan P783/10</p>
--	---	---	---



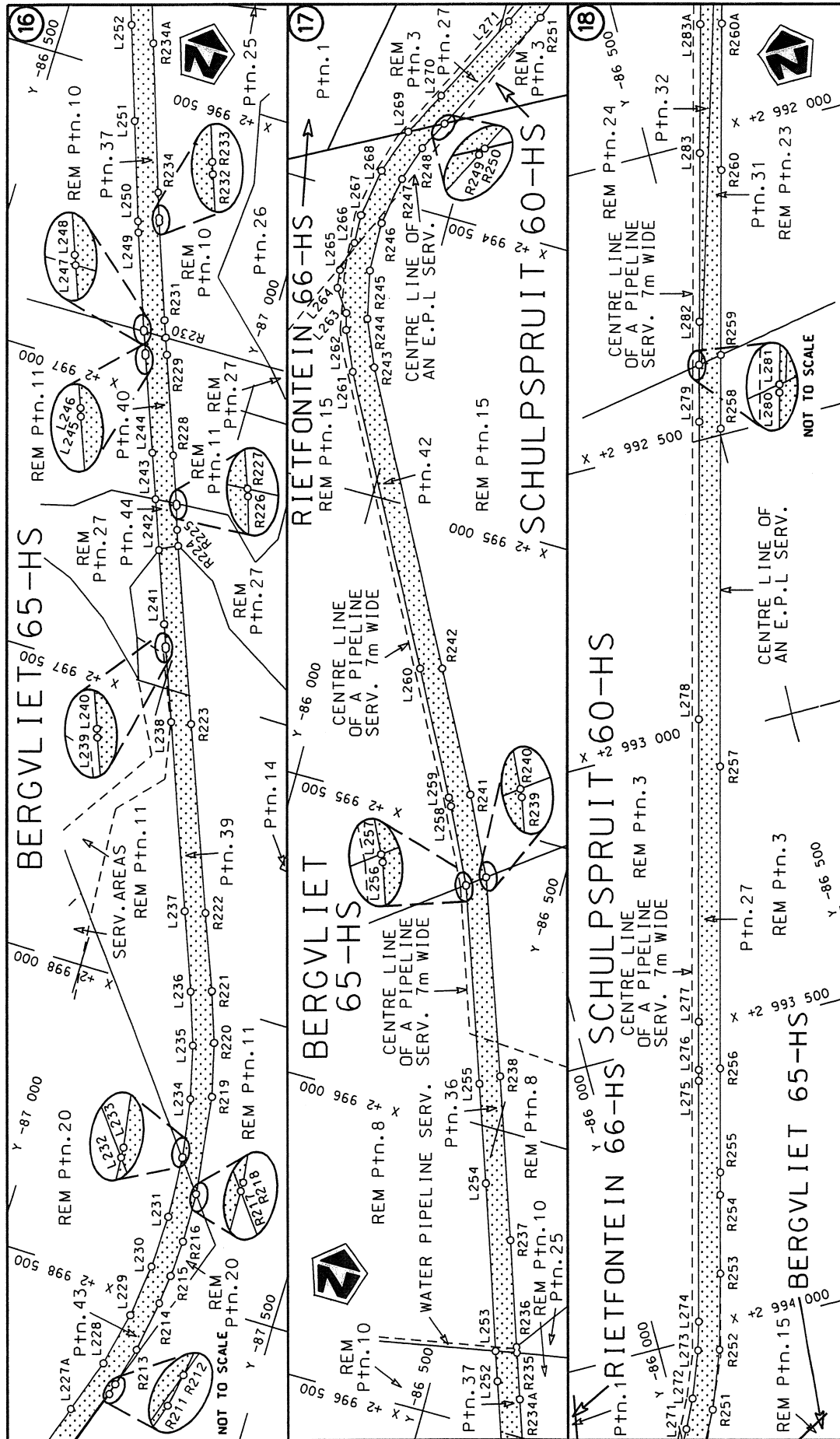
Die Suid Afrikaanse Nasionale Padagentskap Beperk The South African National Roads Agency Limited	Die figuur getoon The figure shown	steldie padreserwe voor van 'n gedeelte represents the road reserve of a portion van Nasionale Roete N11 of National Route	Vel Sheet 4 of 15
	Seksie 5	Plan P783/10	



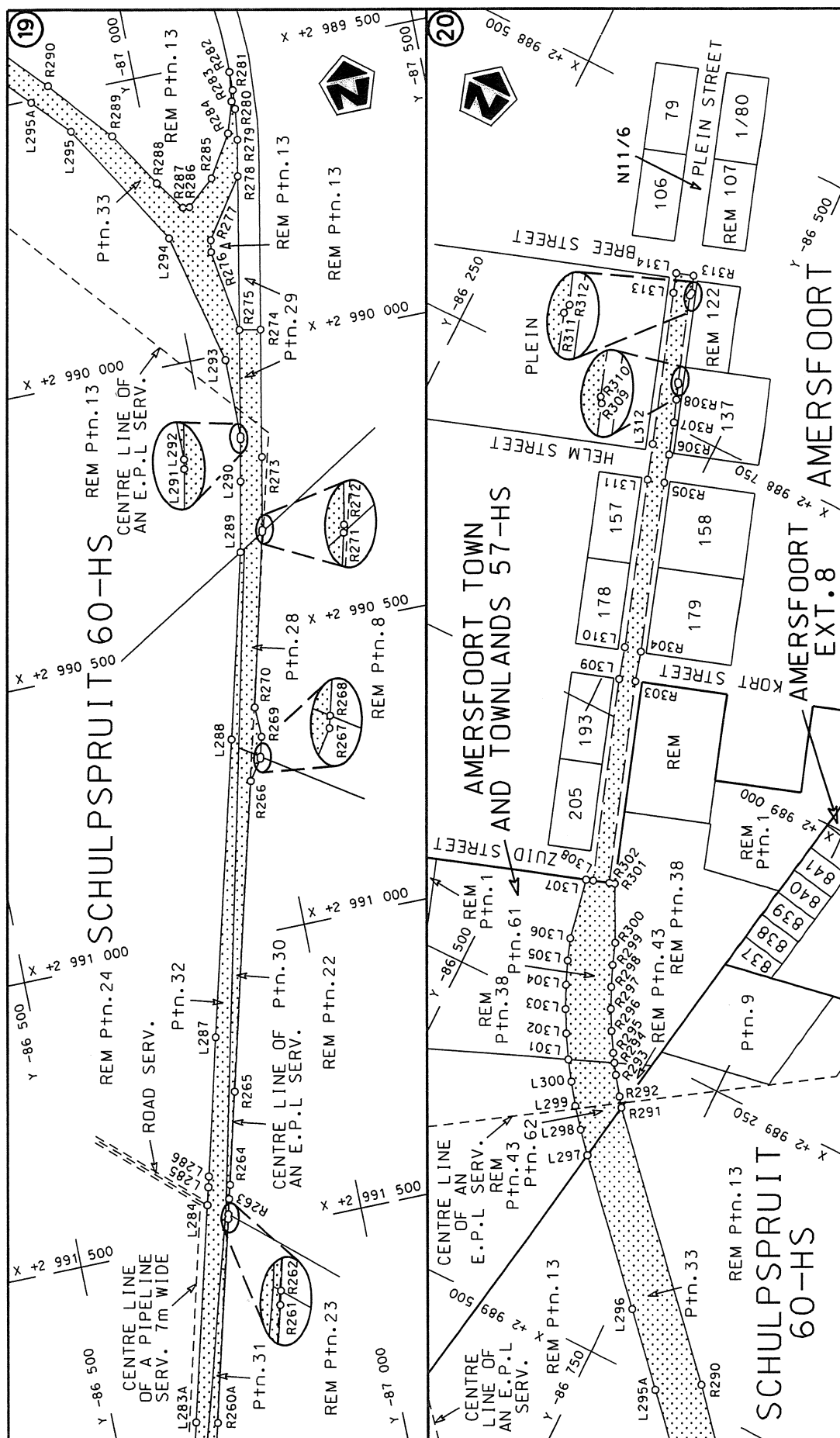
Die Suid Afrikaanse Nasionale Padagentskap Beperk	Die figuur getoon		steldie podreserwe voor van 'n gedeelte represents the road reserve of a portion van Nasionale Roete N11 of National Route	Vel Sheet 5 of 15
The South African National Roads Agency Limited	The figure shown			Plan P783/10



stelsel die padreserwe voor van 'n gedeelte
represents the road reserve of a portion
van Nasionale Roete N11 Seksie
of National Route Section

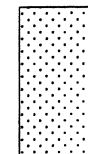


Die Suid Afrikaanse Nasionale Padagentskap Beperk The South African National Roads Agency Limited	Die figuur getoon The figure shown	steldie padreserwe voor van 'n gedeelte represents the road reserve of a portion van Nasionale Roete N11 Seksie of National Route Section	Vel Sheet	7 of	15
Plan	P783/10	5	11	15	15



Die Suid Afrikaanse Nasionale Podagentskap Beperk
The South African National Roads Agency Limited

Die figuur getoon



steldie padreserwe voor van 'n gedeelte
represents the rood reserve of a portion
van Nasionale Roete N11 Seksie
of National Route Section

Vel 8 van 15
Sheet of

Plan P783/10

PADRESERWE KOÖRDINATE				/	ROAD RESERVE CO-ORDINATES			
LINKERKANT/LEFT HAND SIDE					REGTERKANT/RIGHT HAND SIDE			
	Y	X	WG	29°		Y	X	
L1	-87 452.53	3 029 653.31			R1	-87 465.22	3 029 652.92	
L2	-87 454.35	3 029 649.42			R2	-87 467.49	3 029 648.11	
L3	-87 458.29	3 029 637.04			R3	-87 473.76	3 029 639.66	
L4	-87 487.17	3 029 572.11			R4	-87 500.52	3 029 583.71	
L5	-87 491.07	3 029 570.08			R5	-87 516.54	3 029 546.88	
L6	-87 521.60	3 029 503.67			R6	-87 548.94	3 029 478.57	
L7	-87 536.35	3 029 461.05			R7	-87 552.84	3 029 461.83	
L8	-87 543.33	3 029 440.90			R8	-87 553.92	3 029 457.22	
L9	-87 543.68	3 029 439.88			R9	-87 556.98	3 029 442.53	
L10	-87 546.77	3 029 414.66			R10	-87 558.69	3 029 434.30	
L11	-87 561.78	3 029 288.69			R11	-87 560.97	3 029 414.00	
L12	-87 564.32	3 029 266.96			R12	-87 575.48	3 029 291.38	
L13	-87 579.43	3 029 140.05			R13	-87 578.16	3 029 268.73	
L14	-87 582.11	3 029 117.33			R14	-87 593.31	3 029 141.38	
L15	-87 597.32	3 028 989.89			R15	-87 596.25	3 029 117.18	
L16	-87 599.84	3 028 968.06			R16	-87 611.19	3 028 991.68	
L17	-87 615.13	3 028 839.77			R17	-87 613.88	3 028 968.58	
L18	-87 617.95	3 028 816.14			R18	-87 628.84	3 028 842.42	
L19	-87 632.08	3 028 696.43			R19	-87 631.69	3 028 818.54	
L20	-87 635.66	3 028 665.82			R20	-87 646.65	3 028 692.56	
L21	-87 650.77	3 028 539.75			R21	-87 649.83	3 028 665.60	
L22	-87 653.33	3 028 517.82			R22	-87 664.57	3 028 542.00	
L23	-87 668.62	3 028 389.94			R23	-87 667.39	3 028 518.59	
L24	-87 670.96	3 028 371.21			R24	-87 682.84	3 028 390.54	
L25	-87 672.23	3 028 365.78			R25	-87 684.78	3 028 373.72	
L26	-87 673.77	3 028 359.23			R26	-87 684.79	3 028 367.30	
L27	-87 676.28	3 028 346.06			R27	-87 684.82	3 028 347.18	
L28	-87 678.88	3 028 329.79			R28	-87 690.74	3 028 297.41	
L29	-87 682.68	3 028 297.26			R29	-87 715.79	3 028 086.82	
L30	-87 689.74	3 028 236.92			R30	-87 718.40	3 028 059.64	
L31	-87 692.53	3 028 214.80			R31	-87 722.17	3 028 053.87	
L32	-87 693.64	3 028 179.77			R32	-87 724.33	3 028 035.70	
L33	-87 694.68	3 028 167.85			R33	-87 724.33	3 028 031.20	
L34	-87 696.28	3 028 155.46			R34	-87 733.29	3 027 940.13	
L35	-87 701.61	3 028 120.21			R35	-87 735.92	3 027 912.25	
L36	-87 703.02	3 028 107.69			R36	-87 739.85	3 027 905.18	
L37	-87 703.81	3 028 094.03			R37	-87 742.31	3 027 885.44	
L38	-87 707.39	3 028 064.52			R38	-87 740.44	3 027 879.12	
L39	-87 722.20	3 027 939.44			R39	-87 751.06	3 027 789.93	
L40	-87 724.91	3 027 916.52			R40	-87 753.74	3 027 766.94	
L41	-87 731.18	3 027 864.11			R41	-87 768.94	3 027 639.92	
L42	-87 734.15	3 027 839.33			R42	-87 771.43	3 027 619.02	
L43	-87 737.76	3 027 813.86			R43	-87 786.39	3 027 492.43	
L44	-87 740.00	3 027 789.61			R44	-87 789.75	3 027 464.90	
L45	-87 742.78	3 027 766.29			R45	-87 804.40	3 027 340.70	
L46	-87 757.86	3 027 639.41			R46	-87 807.21	3 027 317.58	
L47	-87 760.51	3 027 617.11			R47	-87 814.45	3 027 256.39	
L48	-87 775.70	3 027 489.20			R48	-87 814.67	3 027 253.94	
L49	-87 778.27	3 027 467.07			R49	-87 823.13	3 027 254.95	
L50	-87 793.60	3 027 338.80			R50	-87 908.02	3 027 065.29	
L51	-87 796.31	3 027 316.30			R51	-87 988.62	3 026 724.56	
					Vel 9 Van 15 P783/10			
					Sheet of			

PADRESERWE KOÖRDINATE				/	ROAD RESERVE CO-ORDINATES			
LINKERKANT/LEFT HAND SIDE					REGTERKANT/RIGHT HAND SIDE			
	Y	X	WG	29°		Y	X	
L52	-87 797.86	3 027	304.42		R52	-88 054.72	3 026	518.91
L53	-87 800.74	3 027	275.64		R53	-88 108.09	3 026	357.36
L54	-87 802.19	3 027	263.68		R54	-88 165.46	3 026	186.81
L55	-87 803.96	3 027	252.67		R55	-88 167.96	3 026	180.14
L56	-87 775.09	3 027	249.24		R56	-88 230.03	3 025	984.19
L57	-87 880.27	3 026	927.35		R57	-88 317.07	3 025	720.08
L58	-87 892.90	3 026	886.93		R58	-88 359.53	3 025	571.53
L59	-87 919.22	3 026	808.27		R59	-88 375.13	3 025	491.73
L60	-87 992.27	3 026	585.12		R60	-88 387.78	3 025	397.54
L61	-88 083.12	3 026	308.93		R61	-88 395.19	3 025	314.53
L62	-88 168.97	3 026	045.33		R62	-88 395.89	3 025	218.55
L63	-88 223.93	3 025	877.41		R63	-88 395.88	3 025	172.89
L64	-88 272.47	3 025	729.53		R64	-88 395.19	3 025	155.26
L65	-88 320.65	3 025	562.02		R65	-88 392.56	3 025	120.28
L66	-88 348.70	3 025	394.03		R66	-88 355.55	3 024	810.27
L67	-88 352.91	3 025	304.48		R67	-88 334.10	3 024	637.39
L68	-88 356.84	3 025	228.77		R68	-88 322.47	3 024	541.41
L69	-88 349.90	3 025	127.54		R69	-88 322.39	3 024	540.77
L70	-88 342.13	3 025	023.54		R70	-88 294.52	3 024	294.13
L71	-88 325.99	3 024	879.82		R71	-88 273.22	3 024	113.93
L72	-88 283.74	3 024	530.10		R72	-88 254.47	3 023	951.46
L73	-88 283.08	3 024	524.69		R73	-88 253.63	3 023	786.20
L74	-88 258.67	3 024	311.72		R74	-88 260.20	3 023	684.45
L75	-88 237.30	3 024	135.15		R75	-88 280.62	3 023	599.99
L76	-88 217.40	3 023	962.86		R76	-88 284.74	3 023	579.25
L77	-88 205.86	3 023	868.67		R77	-88 311.02	3 023	465.44
L78	-88 214.63	3 023	779.85		R78	-88 317.95	3 023	429.84
L79	-88 217.38	3 023	775.68		R79	-88 329.78	3 023	369.79
L80	-88 223.96	3 023	677.88		R80	-88 358.03	3 023	217.50
L81	-88 244.09	3 023	573.59		R81	-88 388.85	3 023	083.79
L82	-88 245.95	3 023	561.90		R82	-88 432.06	3 023	013.69
L83	-88 278.73	3 023	393.81		R83	-88 481.09	3 022	938.00
L84	-88 308.21	3 023	240.77		R84	-88 617.53	3 022	815.40
L85	-88 314.27	3 023	210.54		R85	-88 672.50	3 022	668.12
L86	-88 347.95	3 023	061.97		R86	-88 679.38	3 022	557.63
L87	-88 401.46	3 022	973.61		R87	-88 685.03	3 022	457.85
L88	-88 411.99	3 022	957.48		R88	-88 745.26	3 022	350.15
L89	-88 445.36	3 022	923.88		R89	-88 793.87	3 022	290.85
L90	-88 568.27	3 022	805.08		R90	-88 820.75	3 022	254.78
L91	-88 613.50	3 022	702.50		R91	-88 832.95	3 022	209.43
L92	-88 621.22	3 022	589.66		R92	-88 861.67	3 022	151.10
L93	-88 636.40	3 022	468.01		R93	-88 861.94	3 022	150.59
L94	-88 755.49	3 022	253.59		R94	-88 869.24	3 022	136.95
L95	-88 769.90	3 022	227.45		R95	-88 869.93	3 022	135.62
L96	-88 822.64	3 022	133.29		R96	-88 899.11	3 022	079.37
L97	-88 823.06	3 022	132.54		R97	-88 923.95	3 022	009.57
L98	-88 841.94	3 022	098.05		R98	-88 927.25	3 022	000.31
L99	-88 879.43	3 022	006.19		R99	-88 943.88	3 022	003.85
L100	-88 881.27	3 022	000.19		R100	-88 946.57	3 021	979.81
L101	-88 883.31	3 021	993.54		R101	-88 939.68	3 021	931.01
L102	-88 887.31	3 021	979.11		R102	-88 950.67	3 021	864.49
					Vel	10	Van	15
					Sheet		of	P783/10

PADRESERVE KOÖRDINATE					/ ROAD RESERVE CO-ORDINATES				
LINKERKANT/LEFT HAND SIDE					REGTERKANT/RIGHT HAND SIDE				
	Y	X	WG	29°		Y	X		
L103	-88 903.02	3 021 938.30			R103	-88 953.94	3 021 745.31		
L104	-88 906.89	3 021 890.37			R104	-88 963.61	3 021 446.58		
L105	-88 917.88	3 021 716.61			R105	-88 970.11	3 021 222.26		
L106	-88 924.07	3 021 542.35			R106	-88 970.52	3 021 120.74		
L107	-88 929.75	3 021 363.33			R107	-88 970.85	3 021 040.03		
L108	-88 934.54	3 021 190.37			R108	-88 945.01	3 020 848.85		
L109	-88 936.06	3 021 094.88			R109	-88 919.94	3 020 672.26		
L110	-88 931.50	3 021 029.91			R110	-88 871.74	3 020 331.13		
L111	-88 922.93	3 020 964.11			R111	-88 848.86	3 020 168.85		
L112	-88 906.75	3 020 839.98			R112	-88 842.80	3 020 120.25		
L113	-88 903.65	3 020 819.72			R113	-88 809.56	3 019 890.66		
L114	-88 879.98	3 020 657.59			R114	-88 762.31	3 019 556.38		
L115	-88 855.80	3 020 484.39			R115	-88 719.23	3 019 247.60		
L116	-88 831.94	3 020 320.28			R116	-88 694.86	3 019 077.00		
L117	-88 804.45	3 020 126.78			R117	-88 636.27	3 018 661.65		
L118	-88 775.45	3 019 918.07			R118	-88 598.34	3 018 391.90		
L119	-88 756.17	3 019 777.18			R119	-88 587.22	3 018 312.80		
L120	-88 726.76	3 019 568.97			R120	-88 556.09	3 018 093.63		
L121	-88 724.29	3 019 552.60			R121	-88 506.10	3 017 743.64		
L122	-88 720.22	3 019 528.23			R122	-88 505.23	3 017 736.64		
L123	-88 678.36	3 019 229.63			R123	-88 445.01	3 017 311.04		
L124	-88 618.44	3 018 802.43			R124	-88 444.72	3 017 308.98		
L125	-88 590.44	3 018 604.13			R125	-88 439.52	3 017 271.80		
L126	-88 572.81	3 018 479.29			R126	-88 426.80	3 017 180.75		
L127	-88 507.72	3 018 016.95			R127	-88 376.41	3 016 827.18		
L128	-88 450.15	3 017 608.54			R128	-88 337.08	3 016 550.86		
L129	-88 407.33	3 017 309.40			R129	-88 285.30	3 016 190.63		
L130	-88 407.07	3 017 307.59			R130	-88 284.72	3 016 185.33		
L131	-88 366.51	3 017 023.72			R131	-88 212.84	3 015 681.48		
L132	-88 303.62	3 016 584.19			R132	-88 212.10	3 015 676.28		
L133	-88 252.46	3 016 222.11			R133	-88 162.35	3 015 329.75		
L134	-88 196.51	3 015 825.15			R134	-88 160.87	3 015 322.81		
L135	-88 195.07	3 015 818.29			R135	-88 141.94	3 015 172.54		
L136	-88 181.61	3 015 730.12			R136	-88 123.10	3 014 995.02		
L137	-88 180.80	3 015 724.47			R137	-88 111.77	3 014 819.69		
L138	-88 156.41	3 015 553.87			R138	-88 099.09	3 014 628.32		
L139	-88 131.16	3 015 378.68			R139	-88 098.66	3 014 621.90		
L140	-88 130.43	3 015 371.64			R140	-88 098.29	3 014 616.25		
L141	-88 114.45	3 015 252.80			R141	-88 096.92	3 014 595.56		
L142	-88 085.69	3 014 995.24			R142	-88 087.34	3 014 444.58		
L143	-88 074.28	3 014 819.34			R143	-88 076.31	3 014 264.22		
L144	-88 062.93	3 014 645.39			R144	-88 071.12	3 014 177.79		
L145	-88 061.57	3 014 621.81			R145	-88 069.62	3 014 154.48		
L146	-88 061.26	3 014 616.41			R146	-88 037.55	3 013 964.46		
L147	-88 060.94	3 014 611.01			R147	-88 002.74	3 013 790.69		
L148	-88 059.88	3 014 592.72			R148	-87 988.21	3 013 718.10		
L149	-88 052.02	3 014 479.48			R149	-87 988.04	3 013 717.23		
L150	-88 041.10	3 014 310.45			R150	-87 968.28	3 013 618.37		
L151	-88 032.17	3 014 163.04			R151	-87 903.22	3 013 287.18		
L152	-88 018.59	3 014 069.18			R152	-87 819.44	3 012 868.51		
L153	-87 986.14	3 013 900.24			R153	-87 750.66	3 012 523.51		
					Vel 11 Van 15 P783/10 Sheet of				

PADRESERWE KOÖRDINATE					/ ROAD RESERVE CO-ORDINATES				
LINKERKANT/LEFT HAND SIDE					REGTERKANT/RIGHT HAND SIDE				
	Y	X	WG	29°		Y	X		
L154	-87 951.34	3 013	727.86		R154	-87 750.47	3 012	522.57	
L155	-87 914.02	3 013	542.29		R155	-87 696.09	3 012	249.29	
L156	-87 896.46	3 013	450.17		R156	-87 657.29	3 012	051.11	
L157	-87 864.65	3 013	289.98		R157	-87 619.88	3 011	942.09	
L158	-87 806.53	3 012	998.29		R158	-87 613.48	3 011	900.30	
L159	-87 712.61	3 012	529.43		R159	-87 590.19	3 011	869.12	
L160	-87 670.51	3 012	314.43		R160	-87 549.68	3 011	832.73	
L161	-87 650.11	3 012	279.56		R161	-87 487.03	3 011	741.60	
L162	-87 644.57	3 012	254.79		R162	-87 419.92	3 011	635.12	
L163	-87 644.46	3 012	254.28		R163	-87 413.30	3 011	624.62	
L164	-87 648.70	3 012	203.67		R164	-87 358.11	3 011	533.84	
L165	-87 620.16	3 012	059.69		R165	-87 273.25	3 011	401.02	
L166	-87 591.37	3 011	970.48		R166	-87 245.92	3 011	349.54	
L167	-87 526.08	3 011	858.16		R167	-87 222.77	3 011	289.96	
L168	-87 424.52	3 011	703.06		R168	-87 204.63	3 011	229.30	
L169	-87 362.27	3 011	607.76		R169	-87 056.90	3 010	724.40	
L170	-87 360.50	3 011	605.04		R170	-86 957.30	3 010	385.46	
L171	-87 213.28	3 011	381.30		R171	-86 936.98	3 010	289.82	
L172	-87 171.97	3 011	244.44		R172	-86 932.74	3 010	227.68	
L173	-87 021.23	3 010	735.69		R173	-86 937.92	3 010	143.62	
L174	-86 920.42	3 010	391.46		R174	-86 952.40	3 009	991.59	
L175	-86 910.78	3 010	360.69		R175	-86 991.37	3 009	585.51	
L176	-86 910.35	3 010	359.32		R176	-87 024.93	3 009	235.17	
L177	-86 899.89	3 010	291.44		R177	-87 121.90	3 008	222.40	
L178	-86 895.77	3 010	233.46		R178	-87 128.16	3 008	121.37	
L179	-86 900.50	3 010	137.41		R179	-87 129.09	3 008	038.98	
L180	-86 900.56	3 010	136.22		R180	-87 129.11	3 008	037.10	
L181	-86 915.12	3 009	986.40		R181	-87 119.99	3 007	522.63	
L182	-86 925.32	3 009	881.69		R182	-87 110.29	3 007	001.59	
L183	-86 953.67	3 009	590.83		R183	-87 100.88	3 006	476.29	
L184	-86 987.02	3 009	237.54		R184	-87 089.97	3 005	878.91	
L185	-87 038.01	3 008	704.07		R185	-87 089.95	3 005	877.87	
L186	-87 038.10	3 008	703.16		R186	-87 078.65	3 005	275.00	
L187	-87 082.01	3 008	246.29		R187	-87 078.77	3 005	267.92	
L188	-87 090.90	3 008	153.46		R188	-87 072.67	3 004	948.02	
L189	-87 092.32	3 008	076.94		R189	-87 072.65	3 004	947.14	
L190	-87 091.45	3 008	029.41		R190	-87 063.90	3 004	498.43	
L191	-87 082.49	3 007	537.92		R191	-87 053.18	3 004	002.26	
L192	-87 071.76	3 006	953.37		R192	-87 045.53	3 003	659.18	
L193	-87 062.32	3 006	434.79		R193	-87 043.75	3 003	575.52	
L194	-87 052.07	3 005	864.00		R194	-87 032.23	3 003	034.63	
L195	-87 052.04	3 005	862.63		R195	-87 020.53	3 002	505.54	
L196	-87 048.91	3 005	663.14		R196	-87 013.36	3 002	138.70	
L197	-87 051.29	3 005	621.89		R197	-87 002.98	3 001	626.08	
L198	-87 049.48	3 005	542.13		R198	-86 992.57	3 001	099.73	
L199	-87 048.66	3 005	537.29		R199	-86 988.82	3 000	919.89	
L200	-87 048.53	3 005	506.88		R200	-86 983.55	3 000	649.06	
L201	-87 045.80	3 005	398.67		R201	-86 973.30	3 000	129.10	
L202	-87 043.25	3 005	276.07		R202	-86 964.90	2 999	670.48	
L203	-87 038.25	3 005	071.60		R203	-86 968.66	2 999	599.86	
L204	-87 015.26	3 005	025.10		R204	-86 978.55	2 999	527.56	
					Vel	12	Van	15	P783/10
					Sheet		of		

PADRESERWE KOÖRDINATE				/	ROAD RESERVE CO-ORDINATES			
LINKERKANT/LEFT HAND SIDE					REGTERKANT/RIGHT HAND SIDE			
	Y	X	WG	29°		Y	X	
L205	-87 019.41	3 004	982.46		R205	-86 992.52	2 999	462.13
L206	-87 034.72	3 004	939.58		R206	-87 010.82	2 999	406.10
L207	-87 034.57	3 004	932.13		R207	-87 080.73	2 999	204.99
L208	-87 026.08	3 004	497.67		R208	-87 092.99	2 999	170.21
L209	-87 015.52	3 003	987.76		R209	-87 124.00	2 999	080.68
L210	-87 007.91	3 003	639.80		R210	-87 124.16	2 999	080.21
L211	-87 005.74	3 003	566.95		R211	-87 259.10	2 998	691.73
L212	-86 992.40	3 002	957.29		R212	-87 264.16	2 998	672.81
L213	-86 984.49	3 002	562.38		R213	-87 282.20	2 998	605.46
L214	-86 975.33	3 002	132.35		R214	-87 297.65	2 998	517.43
L215	-86 965.61	3 001	629.84		R215	-87 303.40	2 998	466.88
L216	-86 955.33	3 001	101.72		R216	-87 307.24	2 998	404.31
L217	-86 951.89	3 000	930.04		R217	-87 306.06	2 998	320.05
L218	-86 927.05	2 999	690.23		R218	-87 306.06	2 998	319.41
L219	-86 927.41	2 999	669.17		R219	-87 284.89	2 998	152.07
L220	-86 932.92	2 999	605.19		R220	-87 261.82	2 998	062.29
L221	-86 938.84	2 999	536.29		R221	-87 232.59	2 997	977.92
L222	-86 959.33	2 999	445.07		R222	-87 183.19	2 997	851.75
L223	-87 010.18	2 999	294.46		R223	-87 064.72	2 997	546.32
L224	-87 027.87	2 999	242.78		R224	-86 953.84	2 997	256.90
L225	-87 043.31	2 999	198.35		R225	-86 943.79	2 997	230.67
L226	-87 062.25	2 999	143.44		R226	-86 931.18	2 997	191.37
L227	-87 065.62	2 999	133.48		R227	-86 929.62	2 997	187.27
L228	-87 234.20	2 998	643.95		R228	-86 899.73	2 997	108.57
L229	-87 254.85	2 998	551.69		R229	-86 838.43	2 996	944.59
L230	-87 266.52	2 998	461.22		R230	-86 827.94	2 996	916.69
L231	-87 270.56	2 998	370.87		R231	-86 817.32	2 996	888.43
L232	-87 265.23	2 998	267.46		R232	-86 759.23	2 996	728.76
L233	-87 265.16	2 998	266.01		R233	-86 756.86	2 996	722.06
L234	-87 249.58	2 998	166.69		R234	-86 742.44	2 996	680.29
L235	-87 227.43	2 998	077.13		R235	-86 633.45	2 996	360.56
L236	-87 197.10	2 997	989.54		R236	-86 630.14	2 996	351.07
L237	-87 147.33	2 997	859.65		R237	-86 571.35	2 996	176.97
L238	-87 030.33	2 997	552.94		R238	-86 480.18	2 995	910.60
L239	-86 984.82	2 997	434.50		R239	-86 365.95	2 995	585.87
L240	-86 983.15	2 997	429.78		R240	-86 365.90	2 995	585.76
L241	-86 969.73	2 997	394.00		R241	-86 301.59	2 995	454.98
L242	-86 923.62	2 997	273.20		R242	-86 196.21	2 995	257.38
L243	-86 892.01	2 997	190.39		R243	-85 943.76	2 994	783.76
L244	-86 863.07	2 997	114.58		R244	-85 909.77	2 994	705.81
L245	-86 802.87	2 996	956.88		R245	-85 891.84	2 994	624.38
L246	-86 801.31	2 996	952.17		R246	-85 889.47	2 994	539.99
L247	-86 787.99	2 996	917.50		R247	-85 903.18	2 994	457.27
L248	-86 786.91	2 996	914.71		R248	-85 922.93	2 994	396.71
L249	-86 729.06	2 996	756.59		R249	-85 949.22	2 994	345.88
L250	-86 722.64	2 996	738.18		R250	-85 949.66	2 994	345.02
L251	-86 666.73	2 996	574.13		R251	-86 064.41	2 994	124.75
L252	-86 613.17	2 996	416.88		R252	-86 102.20	2 994	027.72
L253	-86 596.15	2 996	367.36		R253	-86 136.76	2 993	901.78
L254	-86 504.23	2 996	094.32		R254	-86 170.38	2 993	771.03
L255	-86 448.36	2 995	932.33		R255	-86 180.42	2 993	733.56
				Vel	13	Van	15	P783/10
				Sheet		of		

PADRESERWE KOÖRDINATE				/	ROAD RESERVE CO-ORDINATES			
LINKERKANT/LEFT HAND SIDE					REGTERKANT/RIGHT HAND SIDE			
		X	WG	29°		Y	X	
L256	-86 336.04	2 995	609.25	R256	-86 224.93	2 993	561.60	
L257	-86 335.53	2 995	608.20	R257	-86 355.90	2 993	056.72	
L258	-86 273.99	2 995	483.39	R258	-86 503.34	2 992	489.07	
L259	-86 266.64	2 995	469.78	R259	-86 535.24	2 992	365.33	
L260	-86 158.95	2 995	267.71	R260	-86 615.49	2 992	056.00	
L261	-85 910.01	2 994	800.93	R261	-86 767.54	2 991	470.66	
L262	-85 879.57	2 994	733.87	R262	-86 769.55	2 991	462.70	
L263	-85 871.96	2 994	705.79	R263	-86 776.02	2 991	437.09	
L264	-85 845.66	2 994	667.75	R264	-86 782.44	2 991	413.65	
L265	-85 841.81	2 994	636.54	R265	-86 822.50	2 991	258.40	
L266	-85 853.54	2 994	585.32	R266	-86 957.61	2 990	737.30	
L267	-85 851.82	2 994	536.13	R267	-86 981.74	2 990	702.73	
L268	-85 865.28	2 994	452.85	R268	-86 982.66	2 990	699.23	
L269	-85 892.03	2 994	375.71	R269	-86 991.40	2 990	665.86	
L270	-85 930.83	2 994	300.33	R270	-86 989.84	2 990	613.41	
L271	-86 011.72	2 994	145.70	R271	-87 063.43	2 990	317.31	
L272	-86 035.46	2 994	097.47	R272	-87 064.57	2 990	312.78	
L273	-86 065.68	2 994	019.67	R273	-87 089.04	2 990	188.26	
L274	-86 079.57	2 993	972.16	R274	-87 130.74	2 989	970.52	
L275	-86 183.36	2 993	572.46	R275	-87 094.47	2 989	963.60	
L276	-86 188.06	2 993	554.56	R276	-87 073.13	2 989	821.40	
L277	-86 208.88	2 993	474.19	R277	-87 076.52	2 989	801.21	
L278	-86 340.05	2 992	968.33	R278	-87 144.38	2 989	701.89	
L279	-86 469.92	2 992	468.25	R279	-87 156.24	2 989	639.71	
L280	-86 494.38	2 992	372.81	R280	-87 162.84	2 989	586.57	
L281	-86 494.45	2 992	372.55	R281	-87 165.07	2 989	553.78	
L282	-86 513.48	2 992	300.49	R282	-87 165.83	2 989	521.83	
L283	-86 586.68	2 992	018.40	R283	-87 159.38	2 989	572.58	
L284	-86 736.82	2 991	439.95	R284	-87 142.51	2 989	625.85	
L285	-86 744.73	2 991	410.06	R285	-87 098.97	2 989	696.30	
L286	-86 749.15	2 991	392.23	R286	-87 051.82	2 989	737.60	
L287	-86 809.19	2 991	159.98	R287	-87 040.04	2 989	735.96	
L288	-86 939.47	2 990	659.83	R288	-87 003.97	2 989	685.58	
L289	-87 019.53	2 990	343.59	R289	-86 943.31	2 989	589.97	
L290	-87 044.30	2 990	222.60	R290	-86 850.26	2 989	482.31	
L291	-87 058.78	2 990	150.71	R291	-86 681.01	2 989	300.32	
L292	-87 059.83	2 990	145.22	R292	-86 675.28	2 989	292.43	
L293	-87 060.48	2 990	010.07	R293	-86 664.04	2 989	277.16	
L294	-87 006.08	2 989	783.34	R294	-86 658.29	2 989	268.52	
L295	-86 874.58	2 989	567.87	R295	-86 653.58	2 989	261.26	
L296	-86 766.40	2 989	451.11	R296	-86 643.75	2 989	244.93	
L297	-86 672.13	2 989	350.22	R297	-86 634.82	2 989	228.15	
L298	-86 657.03	2 989	333.15	R298	-86 626.67	2 989	210.95	
L299	-86 643.75	2 989	317.10	R299	-86 619.37	2 989	193.37	
L300	-86 631.36	2 989	299.79	R300	-86 612.85	2 989	175.19	
L301	-86 620.49	2 989	283.93	R301	-86 589.79	2 989	129.36	
L302	-86 608.90	2 989	264.62	R302	-86 584.97	2 989	130.98	
L303	-86 599.02	2 989	246.07	R303	-86 527.74	2 988	964.03	
L304	-86 590.03	2 989	227.07	R304	-86 520.71	2 988	938.76	
L305	-86 582.03	2 989	207.73	R305	-86 473.49	2 988	797.74	
L306	-86 575.52	2 989	189.37	R306	-86 466.40	2 988	773.86	
				Vel	14	Van	15	P783/10
				Sheet		of		

PADRESERWE KOÖRDINATE				/	ROAD RESERVE CO-ORDINATES			
LINKERKANT/LEFT HAND SIDE					REGTERKANT/RIGHT HAND SIDE			
		X	WG	29°		Y	X	
L307	-86 565.48	2 989	137.54		R307	-86 457.67	2 988	747.06
L308	-86 571.24	2 989	135.60		R308	-86 450.61	2 988	728.33
L309	-86 514.14	2 988	968.66		R309	-86 446.31	2 988	715.68
L310	-86 506.21	2 988	941.64		R310	-86 445.18	2 988	714.04
L311	-86 459.19	2 988	801.98		R311	-86 420.95	2 988	641.90
L312	-86 449.25	2 988	772.12		R312	-86 421.40	2 988	639.10
L313	-86 406.95	2 988	646.49		R313	-86 416.19	2 988	625.15
L314	-86 401.48	2 988	630.08					

Printed by and obtainable from the Government Printer, Bosman Street, Private Bag X85, Pretoria, 0001
Publications: Tel: (012) 334-4508, 334-4509, 334-4510
Advertisements: Tel: (012) 334-4673, 334-4674, 334-4504
Subscriptions: Tel: (012) 334-4735, 334-4736, 334-4737
Cape Town Branch: Tel: (021) 465-7531

Gedruk deur en verkrygbaar by die Staatsdrukker, Bosmanstraat, Privaatsak X85, Pretoria, 0001
Publikasies: Tel: (012) 334-4508, 334-4509, 334-4510
Advertensies: Tel: (012) 334-4673, 334-4674, 334-4504
Subskripsies: Tel: (012) 334-4735, 334-4736, 334-4737
Kaapstad-tak: Tel: (021) 465-7531