



Government Gazette Staatskoerant

REPUBLIC OF SOUTH AFRICA
REPUBLIEK VAN SUID AFRIKA

Vol. 660

5 June
Junie 2020

No. 43405

N.B. The Government Printing Works will
not be held responsible for the quality of
“Hard Copies” or “Electronic Files”
submitted for publication purposes

ISSN 1682-5843



AIDS HELPLINE: 0800-0123-22 Prevention is the cure

IMPORTANT NOTICE:

THE GOVERNMENT PRINTING WORKS WILL NOT BE HELD RESPONSIBLE FOR ANY ERRORS THAT MIGHT OCCUR DUE TO THE SUBMISSION OF INCOMPLETE / INCORRECT / ILLEGIBLE COPY.

No FUTURE QUERIES WILL BE HANDLED IN CONNECTION WITH THE ABOVE.

Contents

<i>No.</i>		<i>Gazette No.</i>	<i>Page No.</i>
GOVERNMENT NOTICES • GOEWERMENTSKENNISGEWINGS			
Transport, Department of/ Vervoer, Departement van			
643	The South African National Roads Agency Limited and National Roads Act (7/1998): Declaration of Existing Provincial Road - (I) Provincial Road D1386 Section 1, (II) Provincial Road P207 Section 1 as National Road R573 Section 1 - Districts of Wonderboom and Cullinan, in the Gauteng Province	43405	3
643	Die Wet op die Suid-Afrikaanse Nasionale Padagentskap Beperk en op Nasionale Paaie (7/1998): Verklaring van Bestaande Provinsiale Paaie - (I) Provinsiale Pad D1386 Seksie 1, (II) Provinsiale Pad P207 Seksie 1 as Nasionale Pad R573 Seksie 1 - Distrikte van Wonderboom en Cullinan, in die Gauteng Provinsie	43405	4
644	The South African National Roads Agency Limited and National Roads Act (7/1998): Declaration of Existing Provincial Road PWV 2 as National Road N4 Section 9-District of Wonderboom in the Gauteng Province	43405	9
644	Die Wet op die Suid-Afrikaanse Nasionale Padagentskap Beperk en op Nasionale Paaie (7/1998): Verklaring van Provinsiale Pad PWV 2 as Nasionale Pad N4 Seksie 9-Distrik van Wonderboom, in the Gauteng Provinsie	43405	10

GOVERNMENT NOTICES • GOEWERMENTSKENNISGEWINGS

DEPARTMENT OF TRANSPORT

NO. 643

05 JUNE 2020

**THE SOUTH AFRICAN NATIONAL ROADS
AGENCY SOC LIMITED**Registration No: 1998/009584/30

**DECLARATION OF EXISTING PROVINCIAL ROADS – (I) PROVINCIAL ROAD D1386 SECTION 1,
(II) PROVINCIAL ROAD P207 SECTION 1 AS NATIONAL ROAD R573 SECTION 1 - DISTRICTS
OF WONDERBOOM AND CULLINAN, IN THE GAUTENG PROVINCE.**

By virtue of Section 40(1)(a) of The South African National Roads Agency Limited and National Roads Act, 1998 (Act No. 7 of 1998), I hereby declare:

- I) The Section of Route R573 Section 1, also known as Provincial Road D1386 Section 1, as declared by Administrator's Notice No's. 37 of 1949, 1046 of 1966, 2865 of 1985, 645 of 1989 and all other Administrator's Notices which might be relevant to this section of road, commencing from Stormvoël Road, also known as M8, up to Sefako Makgatho drive, also known as R513, as depicted on the accompanying sheets 1 to 4 of Plan No. P1190/19, from there onwards it proceeds in a general north easterly direction along the existing Provincial Road D1386 Section 1, up to its junction with Provincial Road P207 Section 1;
- II) The Section of Route R573 Section 1, a section of Provincial Road P207 Section 1, as declared by Administrator's Notice No. 1728 of 1977 and all other Administrator's Notices which might be relevant to this section of road, commencing from its junction with Provincial Road D1386 Section 1, from where it proceeds in a general north easterly direction along the existing Provincial Road P207 Section 1 up to the current Gauteng / Mpumalanga Provincial Border, also known as the common boundary between the farms Jakkalsdans 243 – JR and Hartebeestspuit 235 – JR, as National Road.

**[National Road R573 Section 1: Stormvoël Road – Gauteng / Mpumalanga Provincial
Border, a distance of approximately 45.8km]**



MINISTER OF TRANSPORT

DEPARTEMENT VAN VERVOER

NO. 643

05 JUNIE 2020

**DIE SUID-AFRIKAANSE NASIONALE
PADAGENTSKAP MSB BEPERK**

Registrasie No: 1998/009584/30

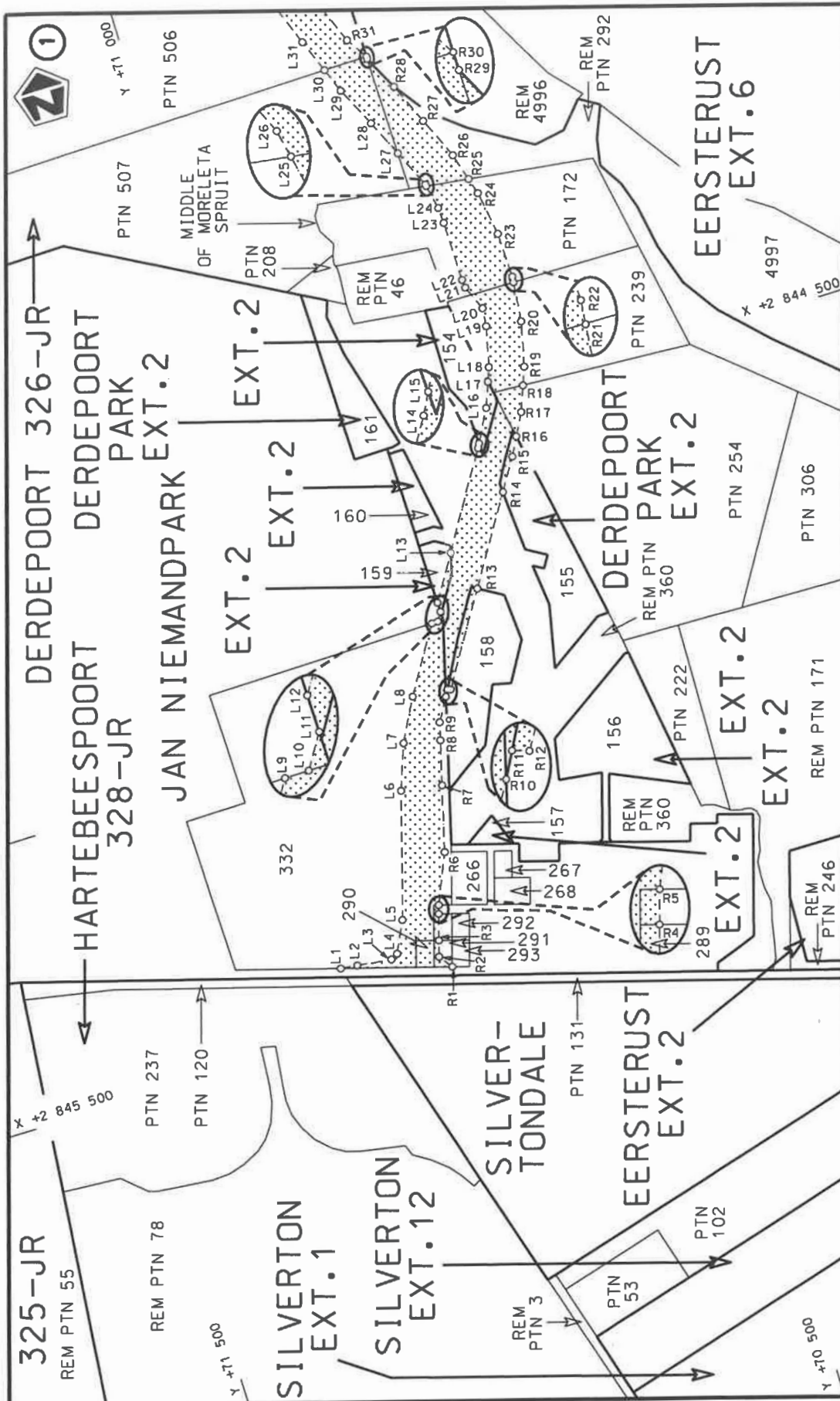
VERKLARING VAN BESTAANDE PROVINSIALE PAAIE – (I) PROVINSIALE PAD D1386 SEKSIE 1, (II) PROVINSIALE PAD P207 SEKSIE 1 AS NASIONALE PAD R573 SEKSIE 1 – DISTRIKTE VAN WONDERBOOM EN CULLINAN, IN DIE GAUTENG PROVINSIE

Kragtens Artikel 40(1)(a) van die Wet op die Suid-Afrikaanse Nasionale Padagentskap Beperk en op Nasionale Paaie, Wet 1998 (Wet No. 7 van 1998), verklaar ek hiermee:

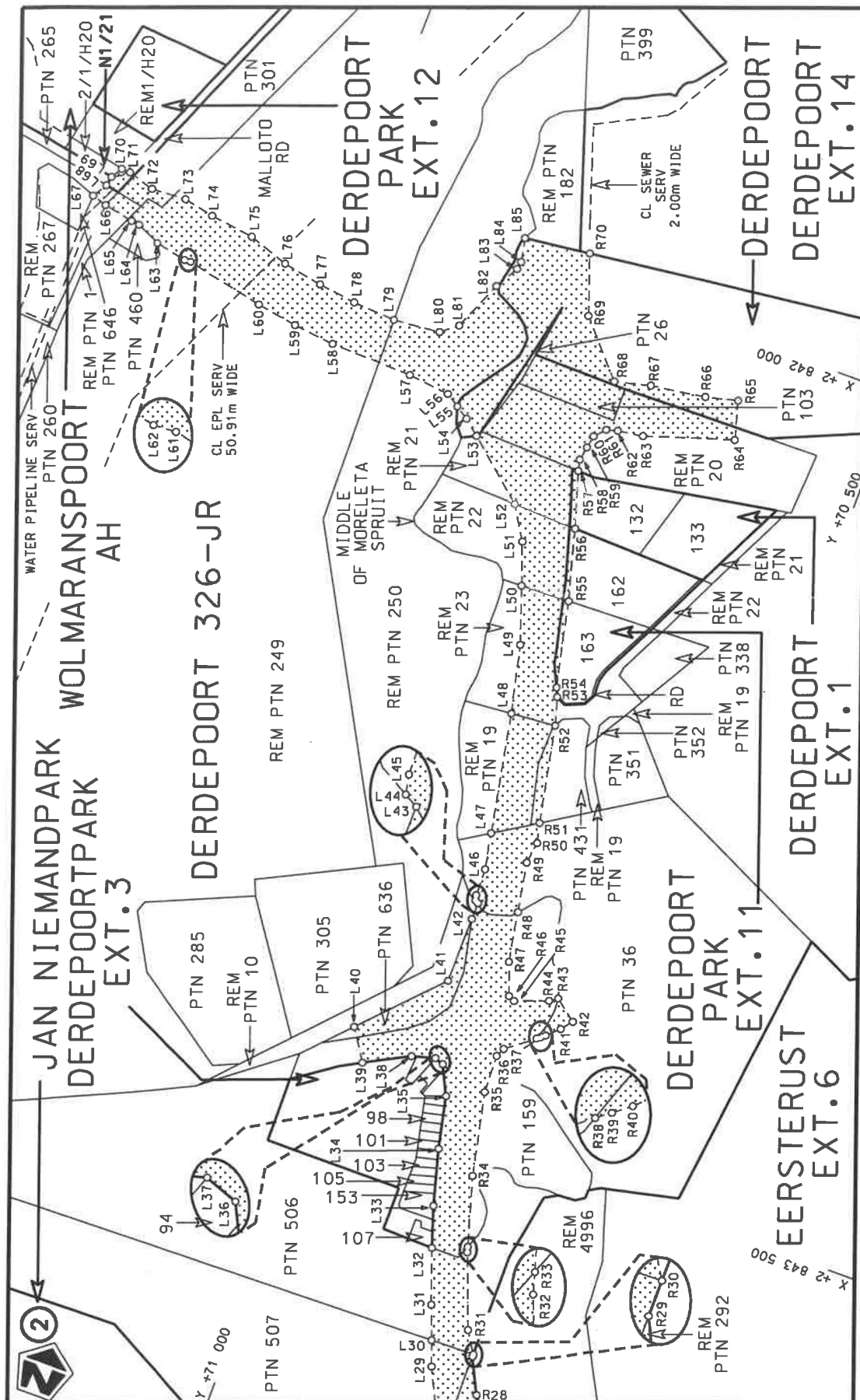
- I) Die gedeelte van Roete R573 Seksie 1, ook bekend as Provinsiale Pad D1386 Seksie 1, soos verklaar deur Administrateurskennisgewing No's. 37 van 1949, 1046 van 1966, 2865 van 1985, 645 van 1989 en alle ander Administrateurskennisgewings wat betrekking op hierdie gedeelte van die pad mag hê, vanaf Stormvoël Pad, ook bekend as M8, tot by Sefako Makgatho Rylaan, ook bekend as R513, soos uitgewys op die bygaande velle 1 tot 4 van Plan No. P1190/19, daarvandaan verder volg dit die bestaande Provinsiale Pad D1386 Seksie 1, in 'n algemene noordoostelike rigting tot by die aansluiting van Provinsiale Pad P207 Seksie 1;
- II) Die Gedeelte van Roete R573 Seksie 1, 'n gedeelte van Provinsiale Pad P207 Seksie 1, soos verklaar deur Administrateurskennisgewing No's. 1728 van 1977 en alle ander Administrateurskennisgewings wat betrekking op hierdie gedeelte van die pad mag hê, vanaf die aansluiting met Provinsiale Pad D1386 Seksie 1 en daarvandaan verder met die bestaande Provinsiale Pad P207 Seksie 1, in 'n algemene noordoostelike rigting tot by die huidige Gauteng / Mpumalanga Provinsiale Grens, ook bekend as die gemeenskaplike grens tussen die plase Jakkalsdans 243 – JR en Hartebeestspuit 235 – JR, as Nasionale Pad.

[Nasionale Pad R573 Seksie 1: Stormvoël Pad – Gauteng/ Mpumalanga Provinsiale Grens, 'n afstand van ongeveer 45.8km]


MINISTER VAN VERVOER



Die Suid Afrikaanse Nasionale Padagentskap MSB Bpk The South African National Roads Agency SOC Ltd	Die figuur getoon The figure shown	<div data-bbox="1316 1064 1412 1220" data-label="Image"> </div>	stel die padreserwe voor van 'n gedeelte represents the road reserve of a portion van Nasionale Roete R573 of National Route Section	Val Sheet 1 of 4	Plan P1190/19	1	1
---	---------------------------------------	---	---	---------------------	------------------	---	---



Die Suid Afrikaanse Nasionale Podogentskop MSB Bpk
The South African National Roads Agency SOC Ltd

Die figuur getoon
The figure shown



steil die podreserwe voor van 'n gedeelte
represents the road reserve of a portion
van Nasionale Roete R573
of National Route
Seksie
Section

Vel
Sheet 2 of 4
Plan
P1190/19

PADRESERWE KOÖRDINATE / ROAD RESERVE CO-ORDINATES									
LINKERKANT/LEFT HAND SIDE					REGTERKANT/RIGHT HAND SIDE				
	Y	X	WG 29°		Y	X			
L1	71 118.41	2 845 388.70		R1	70 931.13	2 845 445.21			
L2	71 089.23	2 845 392.28		R2	70 947.75	2 845 421.31			
L3	71 028.94	2 845 400.03		R3	70 939.59	2 845 393.33			
L4	71 016.52	2 845 393.33		R4	70 925.89	2 845 348.15			
L5	70 989.95	2 845 338.82		R5	70 921.19	2 845 333.14			
L6	70 924.34	2 845 117.66		R6	70 883.50	2 845 245.85			
L7	70 894.99	2 845 038.55		R7	70 852.81	2 845 131.03			
L8	70 855.34	2 844 964.06		R8	70 831.86	2 845 053.22			
L9	70 784.53	2 844 850.11		R9	70 823.50	2 845 022.20			
L10	70 773.73	2 844 850.05		R10	70 799.75	2 844 982.10			
L11	70 764.30	2 844 834.86		R11	70 793.48	2 844 970.68			
L12	70 764.48	2 844 817.85		R12	70 787.64	2 844 972.59			
L13	70 715.92	2 844 739.70		R13	70 689.85	2 844 815.22			
L14	70 614.63	2 844 576.71		R14	70 596.37	2 844 664.64			
L15	70 610.72	2 844 569.32		R15	70 561.97	2 844 609.43			
L16	70 580.18	2 844 512.41		R16	70 544.83	2 844 577.19			
L17	70 563.58	2 844 469.01		R17	70 523.76	2 844 538.13			
L18	70 554.24	2 844 444.24		R18	70 506.95	2 844 493.96			
L19	70 537.23	2 844 373.32		R19	70 494.99	2 844 462.54			
L20	70 533.75	2 844 341.00		R20	70 476.13	2 844 383.88			
L21	70 551.98	2 844 296.95		R21	70 468.60	2 844 313.79			
L22	70 553.14	2 844 282.07		R22	70 467.49	2 844 303.46			
L23	70 554.36	2 844 174.80		R23	70 469.21	2 844 222.59			
L24	70 556.02	2 844 146.53		R24	70 481.25	2 844 142.60			
L25	70 564.42	2 844 103.29		R25	70 489.42	2 844 113.95			
L26	70 565.04	2 844 100.12		R26	70 503.43	2 844 064.82			
L27	70 594.87	2 844 032.13		R27	70 535.38	2 843 990.51			
L28	70 623.64	2 843 966.56		R28	70 566.50	2 843 917.10			
L29	70 657.37	2 843 895.05		R29	70 596.66	2 843 855.19			
L30	70 673.52	2 843 851.99		R30	70 596.69	2 843 851.00			
L31	70 695.97	2 843 792.13		R31	70 620.38	2 843 812.70			
L32	70 730.25	2 843 698.09		R32	70 669.40	2 843 684.72			
L33	70 753.68	2 843 627.06		R33	70 672.13	2 843 675.13			
L34	70 780.64	2 843 529.17		R34	70 708.48	2 843 553.34			
L35	70 801.37	2 843 437.02		R35	70 740.55	2 843 406.79			
L36	70 826.65	2 843 385.85		R36	70 743.44	2 843 339.44			
L37	70 841.86	2 843 380.05		R37	70 736.27	2 843 323.88			
L38	70 881.71	2 843 390.62		R38	70 689.24	2 843 287.12			
L39	70 957.98	2 843 430.40		R39	70 683.22	2 843 282.28			
L40	70 993.88	2 843 375.69		R40	70 675.85	2 843 276.42			
L41	70 869.38	2 843 243.88		R41	70 655.01	2 843 256.65			
L42	70 868.66	2 843 126.60		R42	70 639.91	2 843 237.82			
L43	70 868.48	2 843 097.07		R43	70 678.24	2 843 207.07			
L44	70 874.57	2 843 093.58		R44	70 692.03	2 843 216.72			
L45	70 876.37	2 843 084.52		R45	70 749.10	2 843 237.60			
L46	70 877.92	2 843 035.76		R46	70 760.29	2 843 232.45			
L47	70 890.22	2 842 972.48		R47	70 781.52	2 843 175.51			
L48	70 931.19	2 842 761.25		R48	70 797.79	2 843 088.34			
L49	70 959.50	2 842 641.10		R49	70 814.30	2 842 999.94			
L50	70 993.97	2 842 542.75		R50	70 809.21	2 842 961.06			
L51	71 020.08	2 842 468.27		R51	70 817.30	2 842 926.96			
					Vel Sheet 3	Van of 4	P1190/19		

PADRESERWE KOÖRDINATE / ROAD RESERVE CO-ORDINATES									
LINKERKANT/LEFT HAND SIDE					REGTERKANT/RIGHT HAND SIDE				
	Y		X	WG 29°		Y		X	
L52	71 055.70	2	842	410.54	R52	70 851.94	2	842	755.45
L53	71 160.23	2	842	320.05	R53	70 866.30	2	842	706.58
L54	71 187.08	2	842	297.22	R54	70 873.27	2	842	691.99
L55	71 209.66	2	842	282.24	R55	70 906.91	2	842	540.34
L56	71 233.14	2	842	266.67	R56	70 941.47	2	842	416.00
L57	71 306.41	2	842	257.22	R57	70 972.28	2	842	318.20
L58	71 452.09	2	842	251.15	R58	70 976.80	2	842	298.46
L59	71 524.46	2	842	242.16	R59	70 972.64	2	842	273.85
L60	71 596.24	2	842	229.23	R60	70 968.61	2	842	251.42
L61	71 735.28	2	842	198.81	R61	70 952.11	2	842	233.32
L62	71 746.38	2	842	199.28	R62	70 932.70	2	842	228.04
L63	71 801.42	2	842	187.68	R63	70 888.47	2	842	221.56
L64	71 842.31	2	842	168.00	R64	70 736.50	2	842	173.74
L65	71 856.95	2	842	165.91	R65	70 755.29	2	842	106.81
L66	71 909.51	2	842	154.98	R66	70 811.14	2	842	119.81
L67	71 935.62	2	842	146.74	R67	70 906.78	2	842	133.01
L68	71 920.65	2	842	121.41	R68	70 968.92	2	842	147.92
L69	71 917.28	2	842	104.60	R69	71 051.50	2	842	053.80
L70	71 905.38	2	842	085.10	R70	71 087.95	2	841	949.58
L71	71 889.63	2	842	086.09					
L72	71 843.50	2	842	100.17					
L73	71 782.54	2	842	097.83					
L74	71 727.71	2	842	109.19					
L75	71 649.99	2	842	120.74					
L76	71 578.87	2	842	145.88					
L77	71 509.39	2	842	159.57					
L78	71 442.35	2	842	169.48					
L79	71 366.94	2	842	175.85					
L80	71 284.76	2	842	168.49					
L81	71 256.52	2	842	146.01					
L82	71 220.72	2	842	059.11					
L83	71 197.50	2	842	018.38					
L84	71 195.15	2	842	004.36					
L85	71 203.90	2	841	962.45					

DEPARTMENT OF TRANSPORT

NO. 644

05 JUNE 2020

**THE SOUTH AFRICAN NATIONAL ROADS
AGENCY SOC LIMITED**

Registration No: 1998/009584/30

**DECLARATION OF EXISTING PROVINCIAL ROAD PWV 2 AS NATIONAL ROAD N4 SECTION 9 -
DISTRICT OF WONDERBOOM IN THE GAUTENG PROVINCE.**

By virtue of Section 40(1)(a) of The South African National Roads Agency Limited and National Roads Act, 1998 (Act No. 7 of 1998), I hereby declare the Section of the Provincial Road PWV 2, as declared by all Administrator's Notices which might be relevant to this section of road, commencing from its junction with Road R573 Section 1 up to points L1 and R1 on sheet 1 of Plan No. P617/07 of Declaration No. 1116 of 2007, also known as Doornpoort, as depicted on the accompanying sheets 1 to 2 of Plan No. P1191/19, as National Road.

[National Road N4 Section 9: R573 Junction – Doornpoort, a distance of approximately 1.7km]



MINISTER OF TRANSPORT

DEPARTEMENT VAN VERVOER

NO. 644

05 JUNIE 2020

**DIE SUID-AFRIKAANSE NASIONALE
PADAGENTSAP MSB BEPERK**

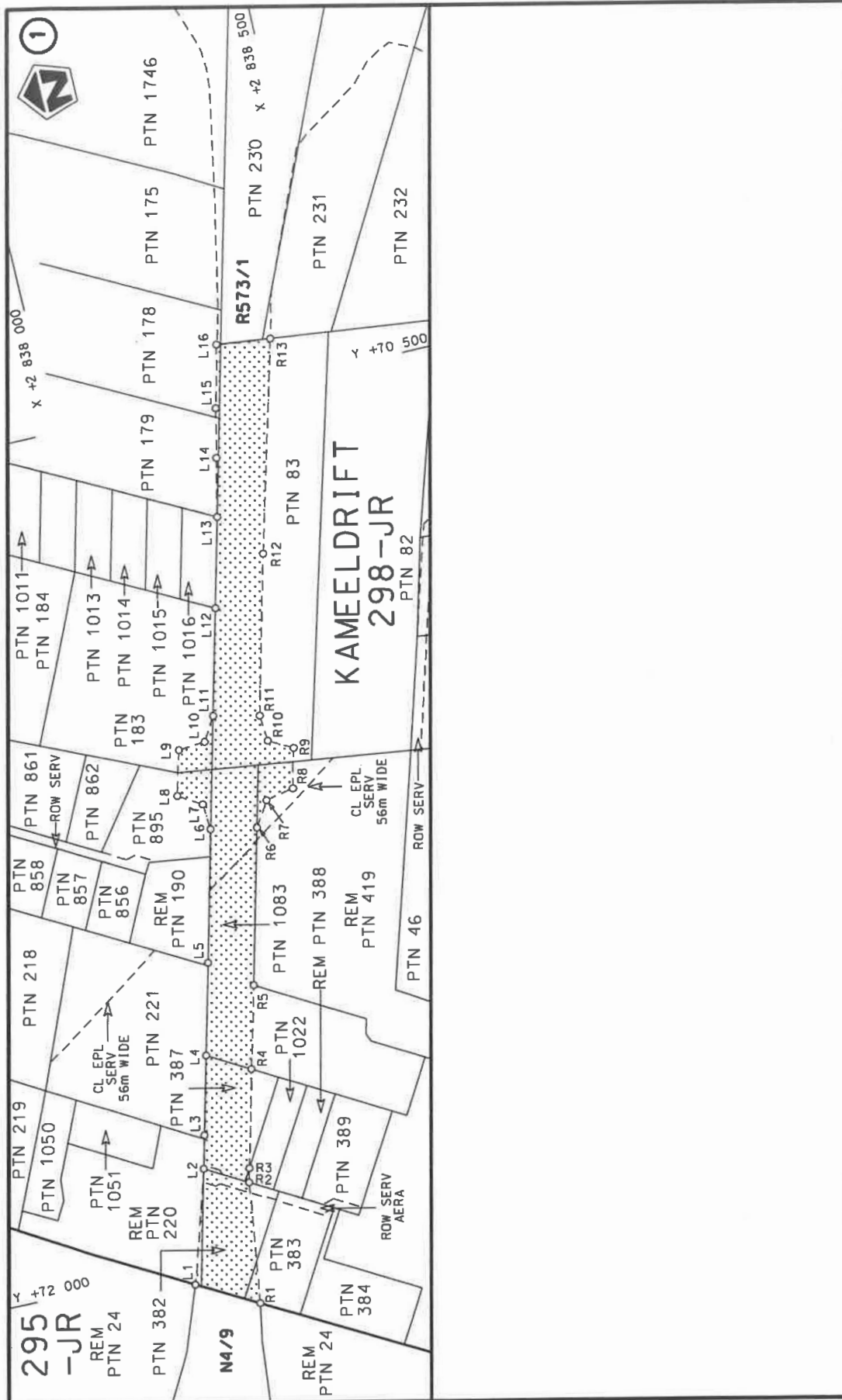
Registrasie No: 1998/009584/30

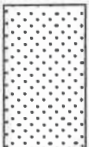
**VERKLARING VAN PROVINSIALE PAD PWV 2 AS NASIONALE PAD N4 SEKSIE 9 – DISTRIKT
VAN WONDERBOOM, IN DIE GAUTENG PROVINSIE**

Kragtens Artikel 40(1)(a) van die Wet op die Suid-Afrikaanse Nasionale Padagentskap Beperk en op Nasionale Paaie, Wet 1998 (Wet No. 7 van 1998), verklaar ek hiermee die gedeelte van die Provinsiale Pad PWV 2, soos verklaar deur alle Administrateurskennisgewings wat betrekking op hierdie gedeelte van die pad mag hê, beginnend vanaf die aansluiting met Pad R573 Seksie 1, tot by punte L1 en R1 op vel 1 van Plan No. P617/07 van Verklaring No. 1116 van 2007, ook bekend as Doornpoort, soos uitgewys op die bygaande velle 1 tot 2 van Plan No. P1191/19, as Nasionale Pad.

[Nasionale Pad N4 Seksie 9: R573 Aansluiting– Doornpoort, 'n afstand van ongeveer 1.7km]

**MINISTER VAN VERVOER**



Die Suid Afrikaanse Nasionale Padagentskap MSB Bpk The South African National Roads Agency SOC Ltd	Die figuur getoon The figure shown	 stel die padreserwe voor van 'n gedeelte represents the road reserve of a portion van Nasionale Roete N4 of National Route	Vel Sheet 1 Plan P1191/19 van of 2 9 2
---	---------------------------------------	---	---

This gazette is also available free online at www.gpwonline.co.za

Printed by and obtainable from the Government Printer, Bosman Street, Private Bag X85, Pretoria, 0001
Contact Centre Tel: 012-748 6200. eMail: info.egazette@gpw.gov.za
Publications: Tel: (012) 748 6053, 748 6061, 748 6065